



South Market EMS Program Newsletter

February 2010



Thursday, February 25 • 4 to 9 p.m.
Refreshments and tours available • Remarks will begin at 5 p.m.



Located at the corner of Hwy 67 and I-94 in Summit. Please enter through the Aurora Medical Center Emergency entrance.

RSVP appreciated. Please call 800-307-2211 or register at www.Aurora.org/SummitEMS



twitter facebook www.Aurora.org/Summit

Aurora Health Care is a not-for-profit health care provider and a national leader in efforts to improve the quality of health care.

2010 Aurora Health Care South Market EMS Continuing Education Schedule

2010 Class 1 – Stroke/Neuro Emergencies

- 1/11/10 – Elkhorn Rescue 7-10pm
- 1/25/10 – Town of Delevan 7-10pm
- 2/15/10 – Lake Geneva 7-10pm
- 2/17/10 – Walworth Rescue 630-930pm
- 3/15/10 – Darien Rescue 7-10pm
- 3/22/10 – Lyons Rescue 7-10pm
- 4/19/10 – Williams Bay Rescue 7-10pm

2010 Class 2 – Medical Legal

- 5/10/10 – Elkhorn Rescue 7-10pm
- 5/24/10 – Town of Delevan 7-10pm
- 6/16/10 – Walworth Rescue 630-930pm
- 6/21/10 – Lake Geneva 7-10pm
- 7/19/10 – Darien Rescue 7-10pm
- 7/26/10 – Lyons Rescue 7-10pm
- 8/16/10 – Williams Bay Rescue 7-10pm

2010 Class 3 – Protocol Testing/Annual Competencies (ATTENDANCE MANDATORY, NO MAKEUP TEST)

- 9/13/10 – Elkhorn Rescue 7-10pm
- 9/27/10 – Town of Delevan 7-10pm
- 10/12/10 – Wheatland Fire 7-10pm
- 10/13/10 – Walworth Rescue 630-930pm
- 10/18/10 – Lake Geneva 7-10pm
- 11/15/10 – Darien Rescue 7-10pm
- 11/22/10 – Lyons Rescue 7-10pm
- 12/20/10 – Williams Bay Rescue 7-10pm

Feel free to give the EMS office a call for clarification on Aurora South Market EMS continuing education.

Medical Reserve Corps

The City of Lake Geneva Emergency Management is forming a Medical Reserve Corps (MRC).

We are looking for residents who are interested in volunteering to help protect the health of our community.

The Medical Reserve Corps are MRC units are community-based and function as a way to locally organize and utilize volunteers who want to donate their time and expertise to prepare for and respond to emergencies and promote healthy living throughout the year. MRC volunteers supplement existing emergency and public health resources.

The MRC was founded after President Bush's 2002 State of the Union Address, in which he asked all Americans to volunteer in support of their country. It is a specialized component of Citizen Corps, a national network of volunteers dedicated to ensuring hometown security. Citizen Corps, along with AmeriCorps, Senior Corps, and the Peace Corps are part of the President's USA Freedom Corps, which promotes volunteerism and service nationwide.

If you are interested please call Captain John Peters Lake Geneva Fire Department at (262) 248-7228 or email jpeters@lakegenevafire.org

SALT Triage

STEP 1 – Global Sorting of Patients:

Walk – move pts who can walk away, **lowest** priority

Wave/Purposeful Movement – pts who can gesture are **2nd priority**

Still/Obvious Threat – pts **not moving** are **TOP PRIORITY**

STEP 2 – Individual Pt Assessment/Triage:

Life-Saving Interventions (LSI) first:

1. Control major bleeding
2. Open airway (if child, give 2 rescue breaths)
3. Auto-injector antidotes (if nerve gas or pesticides)
4. Chest decompression (if indicated)

If **NOT breathing** after LSI = **DEAD**

Obeys commands or making purposeful movement

Peripheral pulse

No respiratory distress

Bleeding controlled

If **any** checkboxes missing, then **IMMEDIATE (red)**

If unlikely to survive given current resources, then

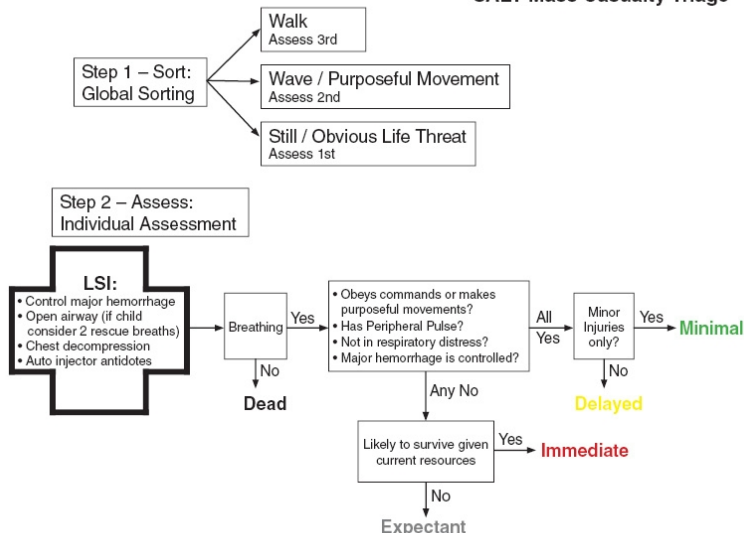
EXPECTANT (gray)

If all boxes checked, then assess – only minor injuries?

No - **DELAYED (yellow)**

Yes - **MINIMAL (green)**

SALT Mass Casualty Triage





Wisconsin Trauma System and Regional Trauma Advisory Councils Introduction

Throughout the United States increasing numbers of states have implemented a Statewide Trauma System as a way to reduce needless death, injury, and suffering. The Wisconsin Trauma Care System incorporates and facilitates a regionalized system that makes efficient use of all appropriate health care resources. The nine Regional Trauma Advisory Councils (RTACs) in conjunction with the State Trauma Advisory Council (STAC) are the foundations for incorporating a state of Wisconsin Trauma System.

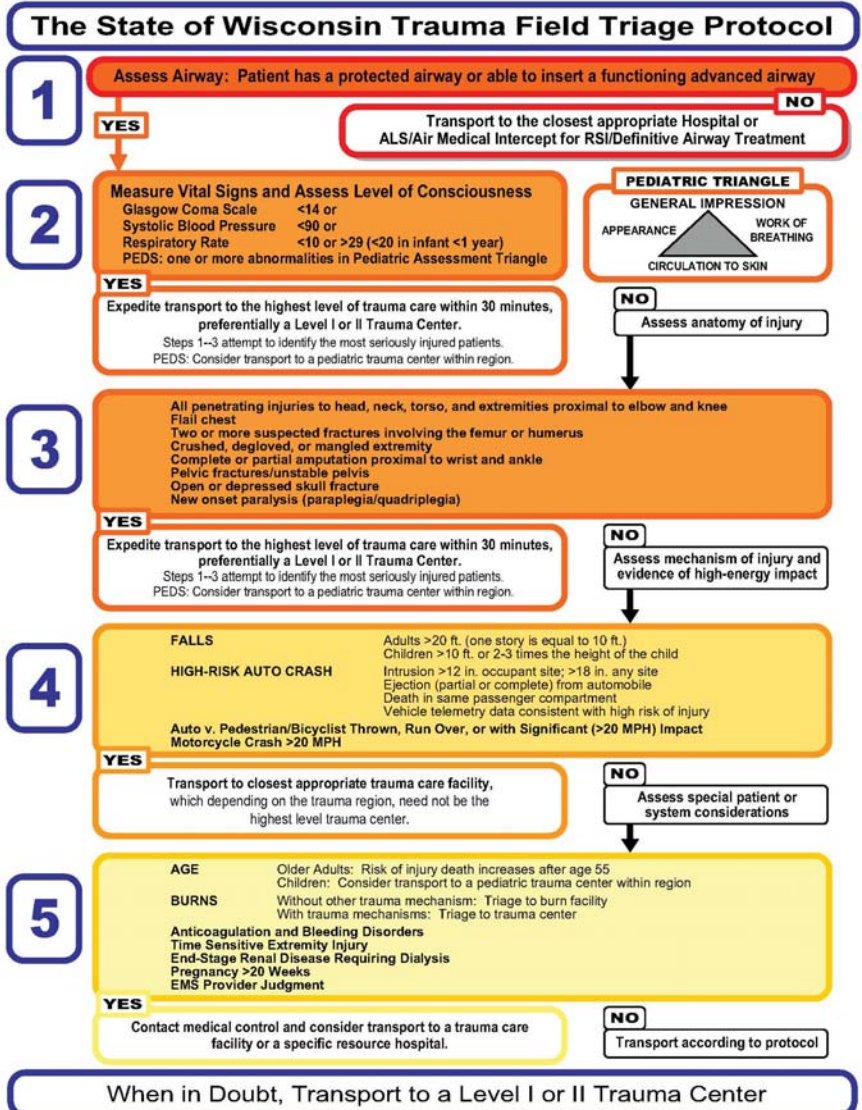
“The Department of Health Services (DHS) is the lead agency for the design, development and implementation of the Wisconsin Trauma Care System. Over the past eight years, DHS and STAC have prepared a plan for making this happen. STAC and RTAC members include nurses, emergency department physicians, emergency medical technicians, and trauma surgeons from around the state or region. The Wisconsin Trauma Care System has organized Wisconsin into nine regions. All hospitals and EMS providers are required to declare the region of the state in which they operate. Region affiliations will decrease boundary confusion, facilitate more Advanced Life Support (ALS) intercepts, and help providers identify the most appropriate facility for trauma patients” (Wisconsin Trauma System).

Your local RTAC or the Southeast Regional Trauma Advisory Council (SERTAC) hosts four meetings a year or more on an as needed basis. The SERTAC promotes optimal trauma care across local, regional, and state boundaries through healthcare professionals who strive to provide quality patient care. The SERTAC currently has four committees consisting of education, medical oversight, performance improvement, trauma coordinators/registrar. The next meeting is scheduled for January 26, 2010 from 2-4pm. The meeting will be located at 8700 W. Watertown Plank Rd, Wauwatosa, WI, 53226 in community conference room 3. The SERTAC is an open meeting and new members are always welcome.

For more information on the Wisconsin Trauma System, STAC or RTACs, please visit: <http://dhs.wisconsin.gov/ems/Trauma/index.htm>

Source: 2006 Wisconsin Trauma System- White Paper.

The Trauma Field Triage Protocol has been reviewed and approved by the EMS Advisory Board, Physician Advisory Committee (PAC), Emergency Medical Services for Children (EMSC), and the State Trauma Advisory Council (STAC). At the February state meetings there was still ongoing discussion regarding the protocols. Although approved there has been no formal announcement of the document. I believe in the near future there will be a formal announcement made to both the EMS Service Directors and Medical Directors.



Patient Medications

More and more we are finding that medications are causing emergent situations in our patients and especially the elderly. Patients are prescribed medications from several different physicians, filling the prescriptions at multiple pharmacies which causes duplication of meds, interactions to meds and overdosing of medications. The more knowledgeable we are about what chemicals (multiple drugs) that are in our patients' bodies the better chance we have at correcting the reaction or emergent situation the patient is in.

The practice of EMS bringing in the medications that the patient takes at home, obtaining a medication list from the patient or family member is the right thing to do to get us this information. **Now** we need to make sure the information is there at the right time we are treating the patient. **Making a copy of the medication list and leaving it with the patient and the ED staff will assist our ability to treat the patient.**

ER Face Sheets

The admitting staff at Burlington, Kenosha and Lakeland are willing to fax face sheets to your department if desired. This will be done every night on 3rd shift. If you are interested in obtaining face sheets via fax, either email myself the fax number and which hospitals you frequent or call the EMS office at the number listed below.

State of Wisconsin EMS - E-Licensing

The Wisconsin Department of Health Service, Wisconsin Emergency Medical Services section has implemented a new method for licensing new EMT's, reciprocity of EMT's and re-licensing of current EMT's. Before the re-licensing in June of 2010, everyone needs to visit their website at the link below to update yourself on the new procedure. The new E-licensing website contains valuable information regarding EMS in Wisconsin so feel free to browse their entire website.

<http://dhs.wisconsin.gov/ems/index.htm>



EMS Equipment

Please pick up your equipment left in the South Region Emergency Departments. There are various backboards, CIDS, splints, etc. Feel free to call the EMS office to find out if you have equipment in any of the ED's.

Contacting the South Region EMS Office

Aurora South Region EMS
P.O. Box 400
Burlington, WI 53105

EMS Office Phone
262-767-6101
Fax: 262-767-6235

Email:
Thomas.Smith@Aurora.org
Tony.Lash@Aurora.org
Dustin.Ellis@Aurora.org